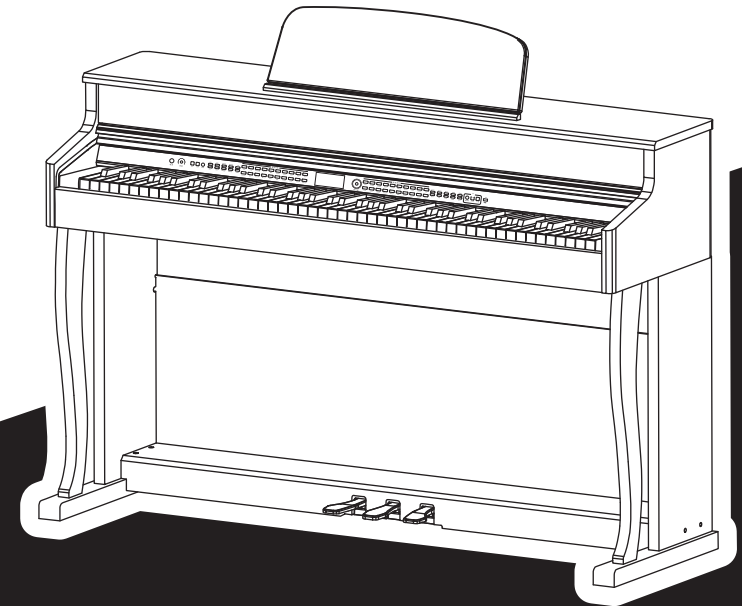


# Digital piano

## Operating instruction



**This product is subject to change without prior notice!**



Thank you for choosing this digital piano from our company. This digital piano is elegant and exquisite, a perfect combination of the latest electronic technology.

◆ Read this instruction carefully before using the instrument.

## ★ Use DREAM sound source

Its core uses French DREAM top sound source, digital sampling, for your performance to bring a realistic auditory experience.

## ★ 88 graded hammer keys.

88-key progressive lever hammer keyboard gives you the real feel of playing on a grand piano.

## ★ High fidelity full frequency speaker

Using the latest full digital amplifier, full frequency hi-fi speakers, playing piano true tone.

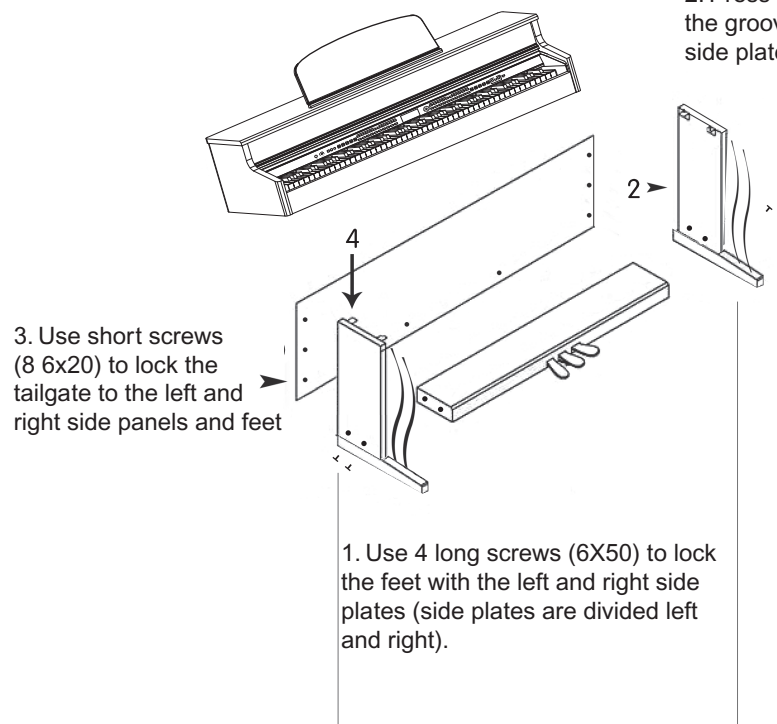
## Special reminder:

This product is an electronic acoustic musical instrument. It is normal to have a little current sound after power-on (two speakers or one of the speakers or earphones). Keep away from "radio, TV, antenna receiver, router, refrigerator, TV, electrical appliances with motors and other RADIO frequency electrical interference sources"



4. Place the body of the instrument and lock the four screw holes pointed by the arrow with black handle screws to complete the installation

2. Press the pedal line into the groove behind the right side plate

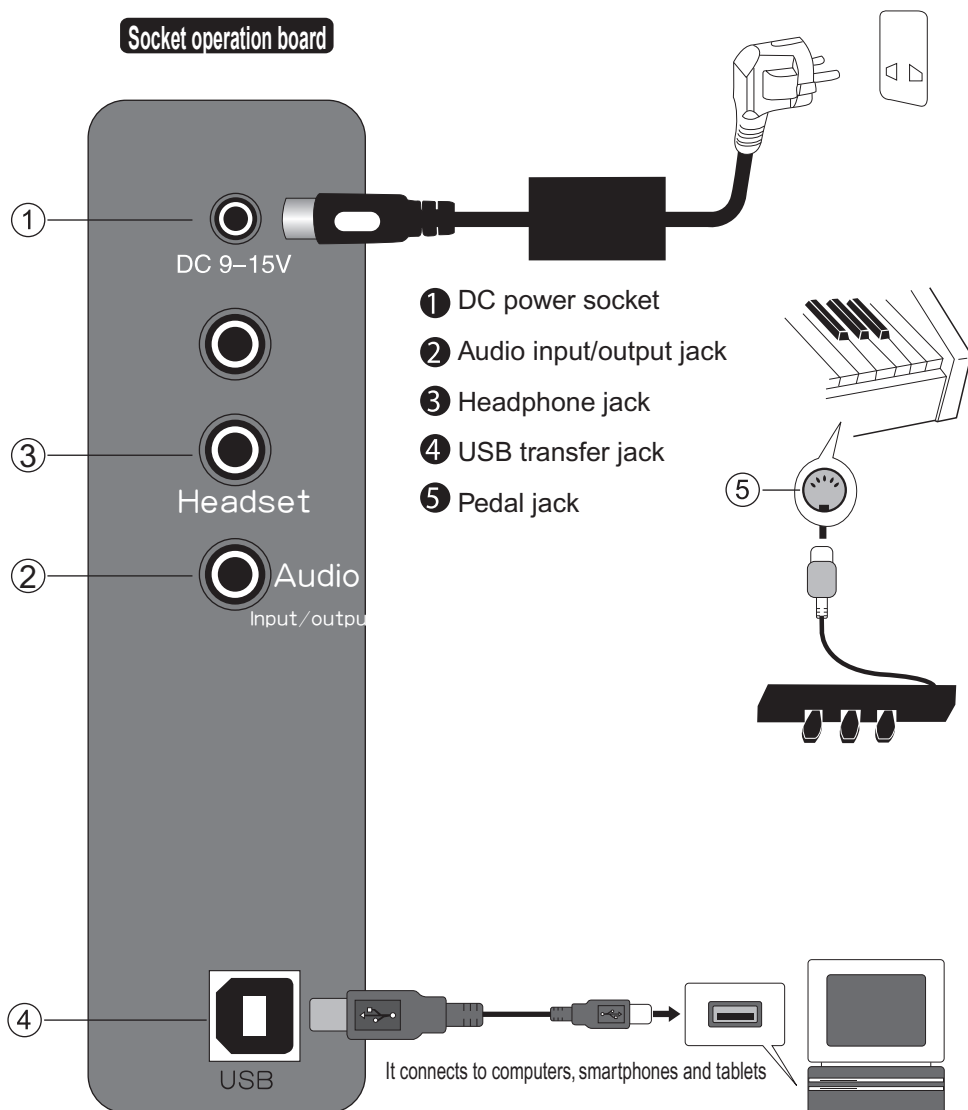


3. Use short screws (8 6x20) to lock the tailgate to the left and right side panels and feet

1. Use 4 long screws (6X50) to lock the feet with the left and right side plates (side plates are divided left and right).

## Installation steps:

1. Secure the left and right side plates and foot pedals with 4 6\*50 cross screws.
2. Press the foot line into the groove behind the right side plate, then secure the rear plate to the left and right side plates with 8 6\*20 screws.
3. Place the piano body on the left and right side plates and install the left and right bent feet. Secure with 4 black handle screws.



### 1 Power Cable Connection

1. When using, connect the power cord according to the diagram. One end is inserted into the power socket in the operating board at the bottom of the piano, and the other end is inserted into the household power socket. (figure 1)
2. If you do not use the product for a long time, please unplug the power cord and keep it properly.

### 2 Audio input/output plug

1. Audio output jack can be connected to large speaker equipment. (figure 2)
2. Audio input jack can connect external audio source to electric piano for playing. (figure 2)

### 3 Headphone jack

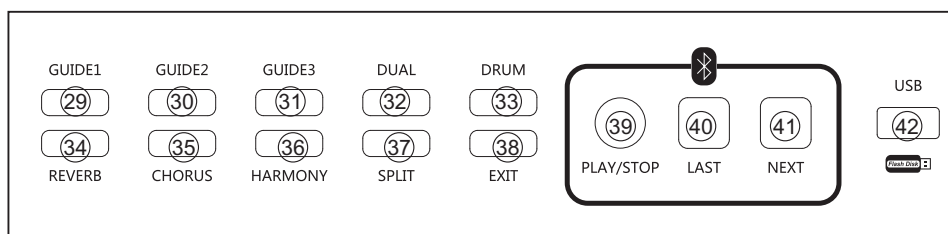
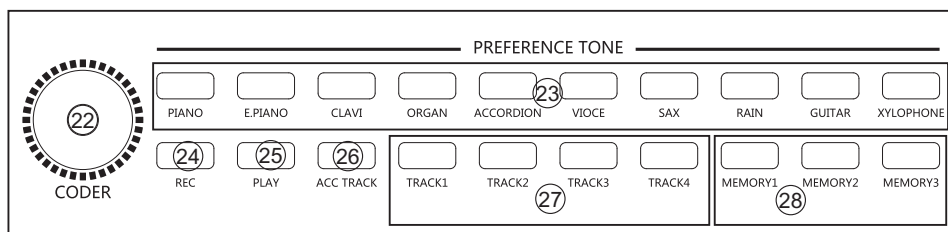
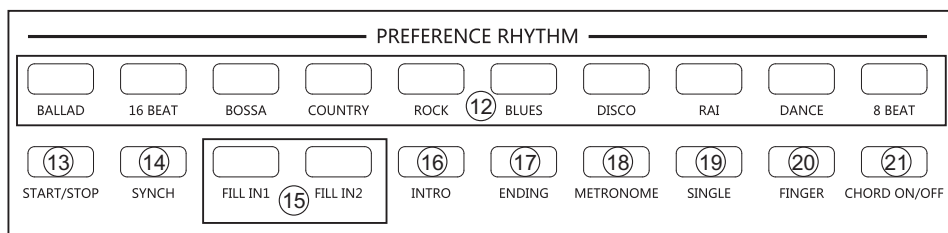
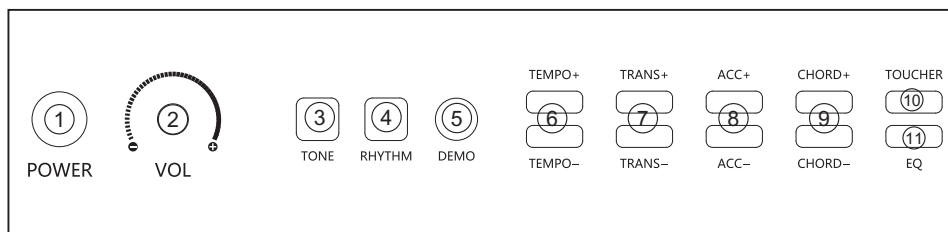
Connecting the headphones will automatically cut off the output of the keyboard's built-in speakers, making it easy to play without disturbing others. (figure 3)

### 4 USB transmission interface

The USB transmission interface of this digital piano can be connected with the computer. Perform, compose, and store music by learning or playing the keyboard through pre-installed music software on the computer. Edited music and music software built-in accompaniment, which can be connected to the digital piano through the software to play, or played according to the accompaniment music. (figure 4)

### 5 Pedal connection

Plug the pedal wire end plug into the circular socket at the bottom of the piano, and you can connect the three pedal sound effects! (figure 5)



- Timbre: 128 timbre (1-128), 10 directly selected timbre.
- Rhythm: 100 rhythms (1-100). 10 directly selected rhythms.
- Demo songs : 100 (1-100).
- Operation display: 5cmx11cm large LCD LCD screen..
- Timbre control: two-tone, two-keyboard, metronome, keyboard drum, reverb, chorus, harmony, equalizer, shift.
- Chord control: synchronization, one-finger, multi-finger chord, insertion.
- Recording control: powerful program four track recording playback function, recording save.
- Force control: five levels of force selection.
- Teaching function: single key, with play, ensemble three teaching modes.
- Memory mode: Three memory modes.
- MP3 player: U disk can be inserted to play music.
- Bluetooth: Data Bluetooth function can be used to connect to the mobile phone piano APP.
- Encoder: various functional parameters can be selected quickly by encoder.
- Pedal control: it can realize the function of sound delay, sound delay and tone reduction.
- USB control: Fast connection to smart devices for interaction and creation.
- Other interface: audio input/output interface. Power socket, headphone socket, pedal socket.



## 1 Playing the piano

1. Press "Power" switch ① to open position, power indicator and LCD screen light up at the same time, you can enter the performance state.
2. Play music on the piano keyboard.
3. Turn off the power when not in use.

- The processor chip of this product is complex, similar to that of a computer system. Sometimes it cannot respond, please turn off the power switch and then turn it on to work normally.

## 2 Volume

Use the "volume" knob to increase or decrease the piano volume, please adjust the volume to a satisfactory position.

## 3 Instrument timbre selection

1. There are 10 directly selected tones on the panel. ②③
2. Press the "tone" button ③ to enter the tone mode.
3. With the CODER ②② can quickly choose any timbre, LCD display corresponding timbre number.
4. Find the tones you need in the appendix. There are 128 tones in total.

## Note!

- Whenever you turn on the digital piano, the initial preset is "piano" tone.

## 4 Rhythm selection

1. There are 10 kinds of common rhythm on the panel ⑫, you can choose one of them directly.
2. Press the "rhythm" button ④ to enter rhythm mode.
3. CODER ②② can quickly choose any rhythm, LCD display corresponding rhythm number.
4. Press the rhythm "START/STOP" button ⑬ to play the selected rhythm.  
To stop the rhythm, press "START/STOP" again.
5. During rhythm playing, press "ACC +" or "ACC -" ⑧ to adjust rhythm volume. There are 32 segments (0-32) of accompaniment volume control, and the default segment is 24.
6. Press "FILL IN1" or "FILL IN2" ⑮ during the rhythm playing to insert a short segment of other rhythms.
7. Pressing INTRO ⑯ will play a rhythm and then start playing the selected rhythm.  
Press ENDING ⑰ to play a rhythm and then stop playing the rhythm.
8. Find the rhythm you want in the rhythm list in the appendix. There are 100 rhythms.



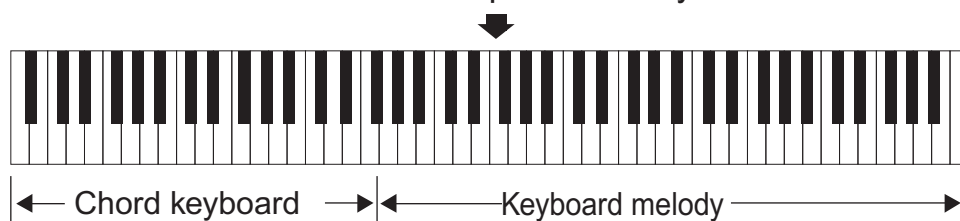
## 5 Tempo speed adjustment

1. Press "TEMPO +" or "TEMPO -" ⑥ to adjust the speed.
2. Speed control range (20-280). The preset value is in section 120 after power-on.
3. Press "TEMPO +" or "TEMPO -" to continuously increase or decrease speed.

## 6 Chords

1. Select the rhythm you want to play, refer to point 4 "Rhythm selection" operation.
2. Press the "SINGLE" ⑱ or "FINGER" ⑲ button to enter the chord state.  
● The chord mode of single and multiple fingers is used. If it conforms to the method of multi-finger chord playing, the instrument responds to multi-finger chord; If it does not accord with the playing method of multi-finger chord, the response will be identified by single-finger chord.
3. Playing chords can be performed by pressing different fingering methods on the accompaniment keyboard (1-34 keys from the left).
4. Press "chord volume +" or "chord volume -" ⑨ to adjust chord volume.  
Chord volume control has a total of 32 segments (0-32), powered on the default 24 segment.
5. Press the "CHORD ON/OFF" ⑳ button to turn off the chord state.

## Automatic accompaniment keyboard



## 7 Start simultaneously

Before starting, choose the rhythm to use, set the speed value and select the chord accompaniment.

1. In the rhythm state, press the "sync" button ⑭ to make it enter the synchronous standby state.
2. Play any key and the accompaniment will start automatically.
3. To cancel the synchronization, press the Start/Stop button ⑬.



### 8 Transposing control

1. Press "TRANS+" or "TRANS-" (7) to select a different shift.
2. There are 25 sections (-12-12) of shift control, and the 13th section is the starting preset.

### 9 Metronome function

Short press "METRONOME" button (18) for metronome function, long press "metronome" button, When the tempo is displayed on the screen, the tempo can be selected by coding (1-8 levels can be selected).

### 10 Built-in demo

1. Press the "DEMO" button (5) to display the current demo song number and start playing the demo song. Press this key again to stop. Loop the song after it's played.
2. Enter the model song mode and select different model song quickly through the CODER (22).
3. Find the music you want in the appendix song list.

## Note!

- The built-in music library of this product contains 100 songs. The built-in music can be used for playing and listening, or for learning to follow the melody on the keyboard.



### 11 Recording

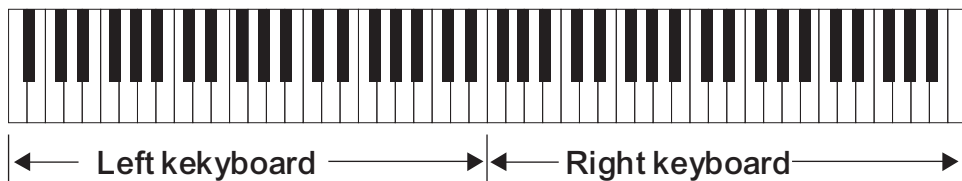
1. Recording
  - Press "REC" (24) and "ACC TRACK" (26) or track 1-4 (27) at the same time to enter the recording mode, then press any key to start recording.
  - The maximum number of recordings is 5000. When the recording is full, it cannot continue to record a note. When recording, you can press the play key to play at any time.
  - If a track has been recorded, you can also choose to play the previous recording of the track when recording other tracks.
  - Each time the recording is pressed, the last memory of the track is erased and the recording is re-entered.
2. Put the sound
  - Press the "accompaniment track" or track 1-4 and then press the "PLAY" (25) to release the recorded note and play it in the selected tone of the recording.
  - Press this key, if accompaniment track or track 1-3 is selected at the end, no action will occur.
3. After the recording is complete, press the record (24) and (25) play keys at the same time.
  - Press record (24) and EXIT (38) at the same time to clear the recording save,

### 12 Double keyboard

1. Enter the tone mode first and select an instrument as the main tone.
  2. Press the "double keyboard" button (37) to enter the split tone selection mode.
  3. Use the CODER (22) to select another musical instrument as the segmentation tone.
  4. Play notes on the keyboard. At this time, the left and right sides of the keyboard emit corresponding Musical Instruments.
  5. Press the "SPLIT" button again to cancel the keyboard partition and return to the normal keyboard status.
- Using the two-keyboard function, you can assign two different tones (primary and split) to each end of the keyboard, so that you can play one tone with your left hand and the other tone with your right hand for an ensemble effect.



### Double keyboard



### 13 Dual tone

1. Enter the tone mode first and select an instrument as the main tone.
2. Press the "DUAL" button (32) to enter the second tone selection mode.
3. Use the CODER (22) to select another instrument as the second tone.
4. When playing notes on the keyboard, two corresponding resonant timbre can be emitted at the same time.
5. Press the "DUAL" button again to stop the function and return to the normal tone state.

- Using the dual tone function, two different tones can be mixed together to produce a sound, which can be mixed at will to create a new tone that resonates with the instrument.

### 14 Efforts to regulate

1. Press the "TOUCHER" button to select force on or off. The default value is on when you start up.
2. Long press "TOUCHER" to enter the force adjustment function. In the function of force adjustment, choose 1-2-3-4-5 with encoder. F machine defaults to level 2.

### 15 Teaching function

1. Teaching 1: Press "GUIDE1" (29) to enter the single-key mode. The user presses any key as the main melody until the end of the song, and then presses this key to exit this mode.
2. Teaching 2: Press "GUIDE1" (30) to enter the following mode. The user must press the corresponding key according to the notes displayed on the LCD to play the next note, until the end of the song, and then press the key to exit this mode.
3. Teaching 3: Press "GUIDE3" (31) to enter the ensemble mode. After the song is played, the user can play the key at will and break the main melody, then press the key to exit the mode.



### 16 Keyboard drum

Press the "DRUM" (33) key and the keys will change into 61 drum keys. Press this key again to exit the mode.



### 17 Equalizer

1. Press "EQ" (11) for the first time, there is a display on the screen that the encoder can adjust the treble size of the key (0-127).
2. Press "EQ" (11) for the second time and it is shown on the screen that the encoder can adjust the bass size of the key (0-127).

### 18 Memory function

First set the corresponding timbre or rhythm, press and hold the "MEMORY" key (28), release the memory key when the screen displays the memory character, until the memory character disappears on the screen and returns to the initial state, the memory is completed, there are three memory states.

### 19 Piano sound

1. Reverb: Press the "REVERB" button (34), the screen will be displayed, and the keyboard sound will be reverb sound. Press this button again to exit this function.
2. Chorus: Press the "CHORUS" key (35), the screen will display, and the key sound will have sound. Press the key again to exit this function.
3. Harmony: Press the "HARMONY" key (36) to display "NATURE". Press the key again to display "CRYSTAL". Key sound chorus sound, press the "EXIT" (38) exit function.

### 20 MP3 player function

Insert the MP3 player into the USB port (42) to automatically play songs, and press "LAST" (40) or "NEXT" (41) to select different songs during the playing process. You can also press the PLAY/STOP button (39) to play or pause the song.

### 21 Bluetooth connection

1. Audio Bluetooth: Turn on the bluetooth function of the mobile phone, pair the corresponding Bluetooth name, and enter the password "8888" to play music on the piano if the Bluetooth connection is successful.
2. Data Bluetooth: Turn on the blue function of the mobile phone and pair with the corresponding Bluetooth name. After the Bluetooth connection is successful. You can use the music of mobile phones and other devices to follow the APP. You can play songs on the piano.





Do a good job of the product maintenance and protection work, to prolong the service life of the product, reduce the fault has a very important role.

### 1 Avoid heat, moisture or direct sunlight

Do not overexpose the product to direct sunlight, or place it near air conditioning, or in extremely hot places.

### 2 Do not use near TV or radio

This product may cause video or audio interference to TV and radio reception. If this happens, the product should be removed from the TV or radio. Do a good job of the product maintenance and protection work, to prolong the service life of the product, reduce the fault has a very important role.

### 3 Do not use paint, thinner or similar chemicals for cleaning

Clean the product with a soft cloth moistened with a weak aqueous solution and a neutral detergent. Soak the cloth in the solution and wring until it is nearly dry.

### 4 Avoid vibration and collision

The product should be carefully handled when moving, and violent vibration and collision are strictly prohibited to avoid damage to the shell or the internal electronic components.



### Tone color table

(Number)	Instrument	025	GUITAR NYLON 1
PIANO		026	GUITAR STEEL 1
001	GRAND PIANO 1	027	GUITAR JAZZ 1
002	BRIGHT PIANO 1	028	GUITAR CLEAN 1
003	PIANO ELEC	029	GUITAR MUTED 1
004	HONKY-TONK	030	GUITAR OVRDRV
005	E PIANO1	031	GUITAR DISTRT 1
006	E PIANO2	032	GUITAR HRMNX
007	GRAND HARPSICHORD	BASS	
008	CLAVI CHORD 1	033	ACOUSTIC BASS 1
		034	FINGER BASS 1
GLOCK		035	ELECT BASS 1
009	CELESTA	036	FRETLS BASS
010	GLOCKENSPIEL 1	037	SLAP BASS 1
011	MUSIC BOX 1	038	SLAP BASS 2
012	VIBRAPHONE 1	039	SYN BASS 1
013	MARIMBA 1	040	SYN BASS 2
014	XYLOPHONE 1	STRING	
015	TUBULR BELLS 1	041	VIOLIN 1
016	DULCIMER 1	042	VIOLA 1
		043	CELLO 1
ORGAN		044	CONTRABASS 1
017	HAND ORGAN 1	045	STR TREM 1
018	PERCHY ORGAN 1	046	STR PIZZ
019	ROCK ORGAN	047	HARP 1
020	CHURCH ORGAN 1	048	TIMPANI 1
021	REED ORGAN 1	CONCERT	
022	ACCORDN 1	049	STRINGS 1
023	HARMONICA 1	050	STRINGS 2
024	TANGO ACCORDN 1	051	STR SYN 1
GUITAR		052	STR SYN 2





053	CHOIR AAHS 1	SYNTH PIPE	
054	VOICE OOHS 1	081	SQR WAVE
055	VOICE SYN	082	SAW TOOTH
056	ORCH HIT 1	083	CALLIOPE
BRASS		084	CHIFF
057	TRUMPT 1	085	CHARANG
058	TROMBONE 1	086	VOICE
059	TUBA 1	087	FIFTHS
060	MUTE TPT 1	088	BASS LEAD
061	FR HORN 1	SYNTH VOICE	
062	BRASS SECT 1	089	NEW AGE
063	BRASS SYN 1	090	WARM PAD
064	BRASS SYN 2	091	POLY SYNTH
PIPE		092	CHOIR PAD 1
065	SAX SOPRANO	093	BOW GLASS 1
066	SAX ALTO 1	094	METAL PAD 1
067	SAX TENOR 1	095	HALO PAD 1
068	SAX BTONE 1	096	SWEEP
069	OBOE 1	SYNTH EFFECT	
070	ENG HORN 1		
071	BASSON 1	097	RAIN FX
072	CLARINET 1	098	SNDTRK FX
WOODPIPE		099	CRYSTAL FX
073	PICCOLO 1	100	ATMOSPH FX
074	FLUTE 1	101	BRIGHT FX
075	RECORDER 1	102	GOBLIN FX
076	PAN FLUTE	103	ECHO FX
077	BOTTLE BLOWN	104	SCI-FI FX
078	SHAKHACHI	FOLK SOUND	
079	WHISTLE 1	105	SITAR 1
080	OCARINA	106	BANJO 1



107	SHAMISEN 1	118	MLDY TOM
108	KOTO 1	119	SYNTH DRM
109	KALIMBA	120	REVR5 CYM
110	BAGPIPE	EFFECT	
111	FIDDLE	121	GTR NOISE
112	SHANAI	122	BREATH 1
PERCUSSION		123	SEASHORE
113	TINKLE BELL	124	BIRD TWEET 1
114	AGOGO	125	TELEPHONE
115	STEEL DRM	126	HELICOPTER
116	WOODBK	127	APPLAUSE
117	TAIKO DRM	128	GUNSHOT 1

## List of rhythmic

8 BEAT		017	Electroacoustic ballade A
001	8 Beat 1A	018	Polk balladeA
002	8 Beat 2A	16 BEAT	
003	8 Beat 3A	019	16 Beat 1A
004	8 Beat rock A	020	16 Beat 2A
005	8 Beat passion A	021	16 Beat 3A
006	8 Beats pop music 1A	022	16 Beat 4A
007	8 Beats pop music 2A	023	16Beat Fink A
BALLAD		024	16Beat Pop music A
008	ballade 1A	025	16Beat song A
009	ballade 2A	LATIN	
010	Guitar ballade A	026	Bossa nova 1A
011	organ ballade A	027	Guitars and bossanovo A
012	Ballade of the blues A	028	Pop the bossa nova A
013	Old ballade A	029	Tango A
014	Rock ballade A	030	cha-cha A
015	Adagio ballade A	031	rumba A
016	Popular ballade A	032	deckers A



COUNTRY		068	reggae A
033	Country music A	069	Remote place ziggy A
034	Country rock A	070	mambo A
035	Rural slide A	071	Folk dance A
036	Rural swaying A	072	Goes to Seth(French ballad) A
037	Country ballade A	<b>DANCE</b>	
038	Country waltz A	073	Indoor dance A
<b>ROCK R&amp;B</b>		074	Adagio foxtrot A
039	'50s rock and roll A	075	Vinenaar Waltz A
040	Heavy metal A	076	Salsa A
041	Rock 1A	077	Disco A
042	Rock 2A	078	hiphope dance is popular A
043	Soft rock A	079	Arnoldus pop A
044	Adagio rock A	080	Club dance A
045	Hard rock A	<b>JAZZ&amp;SWING</b>	
046	Heavy metal 1A	081	Buji dance A
047	Heavy metal 2A	082	Trendy pop A
<b>RHYTHM&amp;BLUES</b>		083	Jazz rock A
048	Chicago Blues A	084	swaying 1A
049	Fast Gospel music A	085	Dixie A
050	Traditional soul A	086	Jazz samba A
051	Rap A	<b>TRADITIONAL</b>	
052	Adagio Gospel A	087	march A
053	Bruce A	088	American March A
054	Adagio blues A	089	samba A
055	fox-trot A	090	polk A
<b>Disco</b>		091	Army polka A
056	Passionate disco A	092	Tarantella A
057	Double disco A	093	Adagio waltz A
058	Double step dance A	094	Army waltz A
059	Pop polka A	<b>PINIST</b>	
060	waltz 1A	095	piano song A
061	Pop waltz 1A	096	waltz 2 (piano) A
062	Pop waltz 2A	097	Guitar waltz A
<b>WORLD MUSIC</b>		098	Piano accompaniment in 2/4 A
063	lae A	099	Piano accompaniment in 3/4 A
064	Twisting dance 1A	100	Piano accompaniment in 4/4 A
065	Twisting dance 2A		
066	Miami pop A		
067	Detroit A		



## List of song titles

Number	SongName	026	Dove
001	MinutWlZ	027	Auldlang
002	DJ Dance	028	Moonligh
003	Fountian	029	HapyBirh
004	SpanGirl	030	PraiseSng
005	SonataPn	031	Dolly
006	SuperSng	032	Market
007	LittlBee	033	Family
008	HorseRac	034	A cradle
009	Nocturne	035	At Home
010	TheSpain	036	Seasons
011	BusyTran	037	YearsAgo
012	Mexico	038	Pigeons
013	MozartPn	039	InnerVic
014	Minuet	040	Violin
015	Nifuma	041	Swan
016	Disco	042	Musettes
017	FolkSong	043	GypsyRnd
018	Girl Sea	044	Serenade
019	LittStar	045	Polka
020	KindeGtn	046	SoilPull
021	Wahaha	047	Trout
022	Duck&Cik	048	Send-off
023	Humorous	049	March
024	Joy Song	050	ForElise
025	GoingHom	051	SwaniRiv



052	France	078	Beyer 70
053	Danube	079	Beyer 71
054	Hungary	080	Beyer 72
055	Spaceman	081	Beyer 75
056	Patriot	082	Beyer 76
057	Cuckoo	083	Beyer 77
058	SingKite	084	Beyer 78
059	TongChil	085	Beyer 79
060	DoReMi	086	Beyer 80
061	We Happy	087	Beyer 90
062	LittlBee	088	Beyer 98
063	Russia	089	Beyer 99
064	Plaster	090	Beyer 26
065	Foison	091	Beyer 27
066	JingleBe	092	Beyer 28
067	PaperBoy	093	Beyer 29
068	Swallow	094	Beyer 31
069	New Year	095	Beyer 106
070	Edelweis	096	Beyer 48
071	MoonRivr	097	Beyer 52
072	Beyer 10	098	Beyer 107
073	Beyer 20	099	Beyer 18
074	Beyer 30	100	Beyer 21
075	Beyer 40		
076	Beyer 50		
077	Beyer 60		



## One finger chord table

YAMAHA One finger chord table example

	M	m	7	m7
C				
C#				
D				
D#				
E				
F				
F#				
G				
G#				
A				
A#				
B				



## Multifingered chord table

Chord Root Type	M	m	7	m7	dim7	M7	m7 <sup>-5</sup>	dim
C								
C <sup>♯</sup> /(D <sup>♭</sup> )								
D								
(D <sup>♯</sup> )/E <sup>♭</sup>								
E								
F								
F <sup>♯</sup> /(G <sup>♭</sup> )								
G								
(G <sup>♯</sup> )/A <sup>♭</sup>								
A								
(A <sup>♯</sup> )/B <sup>♭</sup>								
B								



## MIDI Message

Function		Midi Out	Midi In	Remarks
Basic Channel	Default	1	1 ~ 16	
	Changed	1 ~ 16	1 ~ 16	
Mode		Mode3	Mode3	
Note Number		21 ~ 109	21 ~ 109	
Velocity	Note On	V = 1 ~ 127	V = 1 ~ 127	
	Note Off	8nH V= 64	9nH V= 0, 8nH V=XX	XX: 無關
Pitch Bend		X	O	
Control Change	1	X	O	Modulation
	7	X	O	Volume
	10	X	O	Pan
	1	X	O	Expression
	64	O	O	Sustain
	67	O	O	Soft Pedal
	121	X	O	Reset All Controller
Program Change	123	X	O	All Sound Off
Program Change		0 ~ 127	0 ~ 127	
Aux Messages	Local On/Off	X	X	
	All notes Off	X	O	
	Active Sense	X	O	
	Reset	X	X	



## Power

This product can be powered by standard indoor wall sockets, please use only certified power adapters that meet the standard requirements. When not in use temporarily, please turn off the power. When not in use for a long time, please unplug the power cable and keep it properly.



## Mark

In order to ensure your safe and correct use of the product, to prevent harm to users and others and financial damage, this manual and the product are marked with a series of safety marks. The symbols and their meanings are as follows:

### Warning

This mark indicates that there is a potential danger of death or serious injury if the mark is ignored and the product is incorrectly operated.

### Attention

This mark indicates that there is a potential danger of personal injury or other financial damage if the mark is ignored and the product is operated incorrectly.

## Sign sample



This triangle flag ( △ ) represents what users should be aware of. (The left example is careful electric shock)



Circular signs ( ⊘ ) with slash lines indicate prohibited items. A graphic representation in or next to a sign indicating specific prohibited content. (For the left example, disassembly is prohibited)



Black dots ( ● ) indicate things that must be observed. The icon in this sign represents the content of a specific, subject matter to be complied with. (The left example is that the power plug must be pulled out of the socket)



## Warning

### Smoke, smell, overheating

When this product smoke, smell or overheat, use may lead to fire and electric shock hazard. If the above situation occurs, perform the following operations immediately.

1. Turn off the power.
2. Remove the plug from the power socket.
3. Contact your distributor

### The power cord

- Improper use of power cables may cause fire and electric shock. The following precautions must be observed.
  - The special power cord specified for this product must be used.
  - Use an AC power supply whose output voltage is within the rated of the household voltage.
  - Do not overload power sockets and power extension cords.
- Improper handling of power cables, resulting in damage or breakage, may cause fire and electric shock. The following precautions must be observed.
  - Do not place heavy objects or heat the power cord.
  - Do not attempt to modify or excessively bend the power cord.
  - Do not twist or pull the power cord.
  - If the power cable or plug is damaged, replace it with a power cable of the same specification and type.

- Do not touch the power cord and plug with wet hands, otherwise there is a risk of electric shock.

- Please use the power cord where water will not splash. Water is a hazard of fire and electric shock.
- Do not place vases or any other containers containing water on this product. Water is a hazard of fire and electric shock.
- Do not allow minors to plug or touch the power cord or connecting plate. Minors have no electrical safety knowledge and may cause electric shock.

## Attention

- Improper use of power cables may cause fire and electric shock. The following precautions must be observed.
  - Do not place the power cord near the furnace or other heat source.
  - Do not pull the power cord when removing it from the power socket. Must hold the plug body.
  - The power cord plug must be inserted into the power socket to the end.
  - Make sure the power supply is switched off before connecting or cutting off the power cord.
  - Unplug the power cord from a wall outlet in the event of a thunderstorm or before traveling or other extended absences.
  - At least once a year, unplug the power cord from the wall outlet and clean the dust that accumulates around the plug.



### Do not burn this product

Do not expose the product to fire. Otherwise, wood products will burn and their internal electronic components will explode, resulting in fire and injury risk.



### Water and foreign matter

Water, other liquids and (metal sheet, etc.) entering the product may cause fire hazard and electric shock.



If the above situation occurs, perform the following operations immediately.

1. Turn off the power.
2. If the power cord is being used for power supply, unplug it from the wall outlet.
3. Contact your dealer.

### Dismantlement and transformation

Do not disassemble or modify the product in any way. Otherwise, there is a risk of electric shock, scalding or other personal injury. Delegate all inspections, adjustments and maintenance to your dealer.



### To fall or hit.

There is danger of fire and electric shock after the product is damaged by falling or strong impact. If the above situation occurs, perform the following operations immediately.



1. Turn off the power.
2. If the power cord is being used for power supply, remove it from the wall outlet.
3. Contact your dealer.

### Plastic bags

Do not allow anyone to put this product packaging plastic bag on the head or into the mouth, otherwise there is a risk of suffocation, special attention should be paid to families with young children.



### Keep your distance from this product and support

Climbing on the piano body or its support can cause it to topple or damage, especially for families with young children.



### Put

Avoid placing the product on uneven surfaces or in any other unstable place. Otherwise, the product will fall, and there is a risk of injury.



### Product movement

Before removing the product, unplug the power cord plug from the wall outlet and unplug all other cables and connectors. Otherwise, it may lead to wire damage, fire and electric shock risk.



### Clean

Before cleaning the product, remove the power cord plug from the wall outlet, otherwise there is a risk of fire and electric shock.



### Interface

Only specified devices and devices can be connected to the interface of this product. Danger of fire and electric shock when connecting undesignated equipment or devices.



### Location choice

Avoid placing the product in the following places. Otherwise there is a risk of fire electric shock.



- A hot or dusty place.
- Kitchen or other smoky area.
- Exposure to direct sunlight, or any other place that will cause high temperature of the product.

### Volume

Do not play music at high volume for a long time. Be careful when using headphones. Too high a volume can damage your hearing.



### Weight

Do not place heavy objects on the product. Otherwise, the top of the product will be too heavy, causing the product to tip over or make the objects on it fall off, which may lead to the risk of injury.



### Proper assembly of bracket

Improper assembly of the bracket will cause it to tip over, causing the product to fall, which may lead to the risk of injury.



Therefore, assembly must be carried out in accordance with the instructions in the accompanying manual to ensure that the product is properly mounted on its bracket.

## Safety warning!

Electrical appliances will be aging after long-term use.

It is recommended to test the products regularly after the one-year warranty period is exceeded.

If there is any abnormal phenomenon, please suspend the use and hand over to professional maintenance personnel to avoid safety accidents!

Please cut off the power after each use!



## Attachment list

Name	Number
Power adapter	1 PCS
Body	1 PCS
Pedal beam	1 PCS
Left/right support plate	2 PCS
Back plate	1 PCS
Screw	16 PCS
User Manual	1 PCS

## Instrument parameters

Keys: 88	Intonation: $\leq 3$ the sound
Range: A2 ~ C5	Output power: $\geq 25W \times 2$
Style: Upright piano	Power supply parameters: DC 15V 3A 50/60Hz
Assembly specification: length 137X width 50X height 93CM	Packing specification: length 146X width 57.5X height 46CM

## Troubleshooting

Fault	Possible causes/Solutions
When the power is switched on, a puffing sound is produced	This is a normal phenomenon, please do not worry
When the power is turned on, pressing the keyboard does not make any sound.	Make sure the main volume control is set in the appropriate position. Or check whether there is any other device connected to the earphone output jack, so the built-in speaker system automatically disconnects
Note quality is slightly different from note quality under the same timbre	This is a normal phenomenon, due to the different timbre sampling range and produce different sound quality
When using the duration function, some timbre duration is long, and some timbre duration is short.	This is normal because the duration of the different timbre of the instrument has been set to the maximum length
The volume is too small	Make sure the master volume control is set in the appropriate position
Some MIDI data cannot be transmitted correctly (even when the MIDI cable is properly connected)	This is a normal phenomenon and is related to the initial setting state of the piano
When using mobile phone or mobile phone close to the horn noise phenomenon will occur	Mobile phones can cause interference. To avoid this noise, turn off your mobile phone or use it away from your keyboard
The pitch of the keyboard does not match the position of the keyboard when it is played.	You may turn on the double keyboard or move the function, at this time turn off the double keyboard or move reset to zero; You can also turn off the power switch to restart.
You can't change the tone while playing, and the pitch of the keyboard doesn't match the actual position of the keyboard	You may turn on the double keyboard function, turn off the double keyboard function at this time; You can also turn off the power switch to restart.
Playing demo song sound distortion or discontinuous	The possible reason is that the over-heated circuit self-protection system of the power amplifier is started due to the long time of high-power playback. At this time, it can be recovered by turning down the volume or turning off the power for a period of time
There are two timbre occurring at the same time	The likelihood is you opened double tone function, close double tone function right now can

Note: The equipment has been tested and complies with national safety regulations and EMC and other relevant regulations. Radio communication may cause interference to the equipment, or the equipment may affect radio or TV reception. Users should take one or more of the following measures to correct interference:

- Reposition or replace the receiving antenna.
- Increased direct isolation between device and receiver.
- The receiver connects the device to sockets on different lines.
- Consult dealers or experienced radio/television technicians.

Warning user: Any unreasonable changes or modifications may affect the normal operation of the device.



## Records of the warranty

warranty date	Fault and handling methods	Completion date

## Product certificate

Product Name: Digital piano

Product Model: \_\_\_\_\_

Factory Date: \_\_\_\_\_

Inspector: \_\_\_\_\_

## Warranty card

Dear users:

Thank you for choosing digital piano series products. When you purchase products, please ask the dealer to fill in the date of purchase, product model and stamp the shop seal, and keep this card properly.

Purchase date	
Product model	
Dealer phone	
Dealership chapter	

## THE warranty

1. Under normal circumstances, our factory guarantees the products free of charge for one year from the date of purchase.
2. During the warranty period, if there is any damage caused by use, storage, improper or self-disassembly, the material fee shall be charged accordingly.
3. If the warranty period exceeds, the cost shall be charged accordingly.
4. Please contact the dealer directly for repair service.